



**P+SITIVE PLANET
INTERNATIONAL**

Economic growth through sustainable access to renewable energy solutions in rural Lesotho

Newsletter 05 — March 2019 to May 2019



**Rural Self-Help
Development Association**
Mokhatlo oa Ba Ithusang Ho Itšebeletsa Metseng




reciprocity



Funded by the European Union

Economic growth through sustainable access to renewable energy solutions in rural Lesotho

TRAINING OF RSDA ON EERE

On the 27th of March 2019, the project team started the training of RSDA staff on climate change and renewable energy. This first session aimed at introducing the learning objectives to ensure that they were in line with the participant's expectations and sharing the agenda of the following four days of training that took place in the week of the 8th April. During the same period, RSDA staff had some 'homework'. They were given the opportunity to take home some of the Schneider solar home lighting products to test and provide feedback on their efficiency and be better prepared to explain how to use them to potential customers.



The training had two objectives:

- ⇒ To raise awareness of RSDA's staff on the harmful effects of biomass and fossil fuels and on the benefits of Energy Efficient and Renewable Energy technologies
- ⇒ To build RSDA's capacity to train the Independent Distributors.

The training approach was interactive and ensured engagement and participation of the participants throughout the sessions by using different techniques such as demonstration, role-playing, presentations, video and storytelling, questions and answers session; games and homework.



"The use of games and exercises was extremely helpful and easy to reflect on."



Economic growth through sustainable access to renewable energy solutions in rural Lesotho

SUSTAINABLE ENERGY INFORMATION AND DEMONSTRATION DAY

Positive Planet International and RSDA were invited to the 'Information and Demonstration Day' on Sustainable Energy held on the 12th April 2019 in Maseru, hosted by the Government of Lesotho, UNDP and the European Union. The event was graced by among others the Minister of Energy and Meteorology, UN Resident Representative, European Union, other UN agencies, academia, NGOs and Private Sector (16 Exhibitors) as well as +200 members of the public. The objectives of the event were awareness creation on sustainable energy, innovation showcasing and as well as information sharing.



Minister of Energy and Meteorology at the PPI and RSDA stall

The Minister, UNDP representative and other delegates were briefed at our stall. We shared the overview of the project, target beneficiaries, project coverage, activities as well as demonstration of the products. Among the activities at our stall were games to test people's knowledge on energy and calculations on energy savings in Lesotho.

Later in the day there was the round table discussion in which Mrs. Mampho Thulo, RSDA Managing Director participated as a panelist representing the Civil Society.



You can watch and download the project video screened during the day on Positive Planet International website!



Funded by the European Union

Economic growth through sustainable access to renewable energy solutions in rural Lesotho

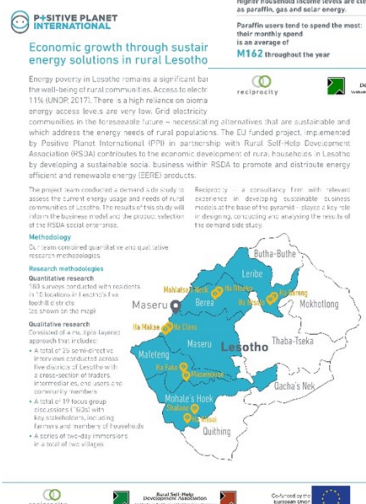
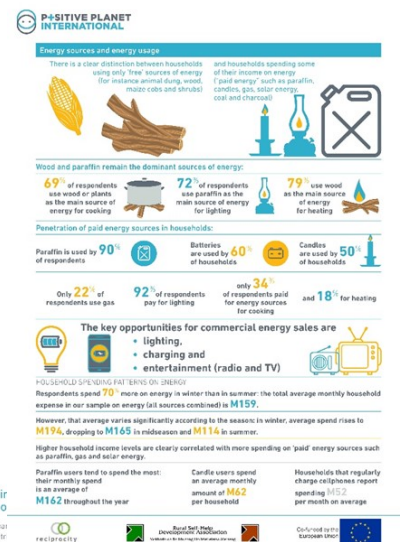
TECHNICAL NOTE

The **first technical note on the demand-side study** has been released and is now available for download on Positive Planet International website! It is also available as a summarized 8-pages booklet.

The study investigated the energy needs and usage in rural communities of five districts of Lesotho. The summary 8 - pages booklet highlights the methodology approach and focuses on the key findings of the research.

The research demonstrated a clear need for alternative energy sources, especially for lighting, charging and cooking.

The data, gathered last year in the five districts of Maseru, Mafeteng, Mhales' Hoek, Berea and Leribe by the research team, is key to informing the business model for the distribution of EERE household devices.



GOLDMAN SACHS GIVES

**Goldman
Sachs**
Gives

Goldman Sachs Gives, a registered charity in the United Kingdom, is committed to fostering innovative ideas, solving economic and social issues, and enabling progress in underserved communities globally. Goldman Sachs Gives made a grant to Positive Planet International that will be used towards the training (sales and marketing skills) of the 40 IDs for 12 months. The project aims to employ at least 75% female IDs, who play a pivotal role in reaching out to rural communities and promote EERE products.





**POSITIVE PLANET
INTERNATIONAL**



**Rural Self-Help
Development Association**
Mokhatlo oa Ba Ithusang Ho Itšebeletsa Metseng



Larissa SETARO
Project Manager
larissa.setaro@positiveplanet.ngo

Lineo LEKHANYA
EERE Manager
lekhanyal@rsda.org.ls



Albury Office Park, Magalieszicht Avenue,
Johannesburg, South Africa

<http://www.positiveplanetinternational.org>

PO Box 0523, Maseru West 105, Lesotho

<https://rsdalesotho.com/about/>



This publication was produced with the financial support of the European Union. Its contents are the sole responsibility of Positive Planet International and do not necessarily reflect the views of the European Union



<http://europa.eu>

Funded by the European Union